





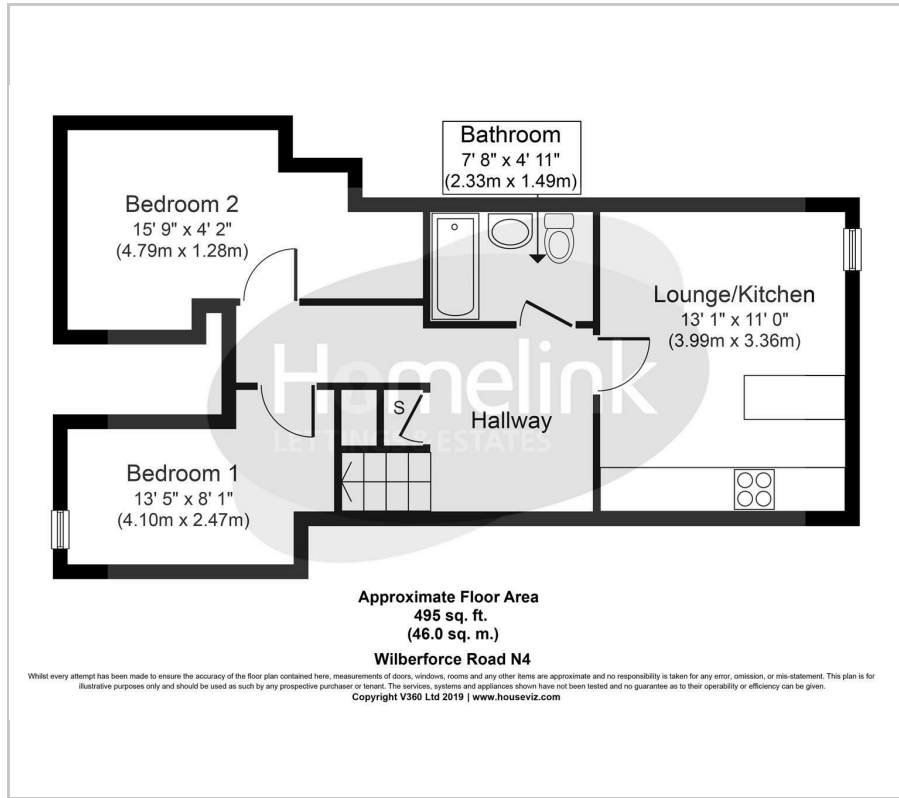


Wilberforce Road, Finsbury Park, N4

£1,850 PCM

 2  1  1  D

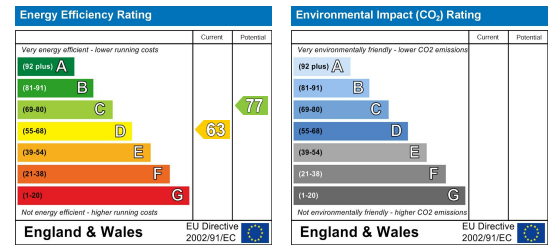
Floor Plan



Area Map



Energy Efficiency Graph



Viewing

Please contact our Homelink Lettings & Estates Office on 0208 882 2112 if you wish to arrange a viewing appointment for this property or require further information.

- Two Bedroom Basement Flat
- Fully Tiled Shower room
- Double Glazing
- Close to local Amenities
- Hackney Council Tax Band C
- Open Plan Lounge/Kitchen
- Gas Central Heating
- Wooden Flooring
- C/Tax 2026/27- £1,831.38
- Walking distance to Finsbury Park station.



Available from the 13th September 2026 Homelink are delighted to offer for rent this well located and refurbished two double bedroom basement flat set on the borders of Finsbury Park and Highbury.

The property benefits from having two good sized bedrooms, open plan lounge/kitchen, fully tiled family bathroom, comes fully furnished and has gas central heating, wooden flooring and double glazing throughout.

Great location for commuters into London's town centre with Finsbury Park Tube Station (Piccadilly & Victoria Lines, Zone 2) as well as an Overground station and a bus terminus, all just a short walk away. Bus routes available close by with easy access to Harringay, Holloway & Stoke Newington. Local amenities include Sainsburys (other supermarkets available too) as well as local stores, pubs, restaurants and numerous cafés.

To arrange a viewing, call and speak to one of our friendly lettings team. Early viewings recommended due to high demand.

** The advertised pictures are prior to the current tenancy **

C/Tax 2026/27- £1,831.38
Hackney Council Tax Band 'C'



These particulars, whilst believed to be accurate are set out as a general outline only for guidance and do not constitute any part of an offer or contract. Intending purchasers should not rely on them as statements of representation of fact, but must satisfy themselves by inspection or otherwise as to their accuracy. No person in this firm's employment has the authority to make or give any representation or warranty in respect of the property.

Homelink Lettings and Estates
62 Chase Side, London N14 5PA
0208 882 2112 homelink.co.uk

